



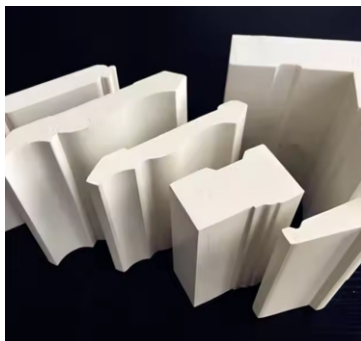
GREEN PLASTICS SPECIALIST

Specialty Manufacturer of PVC products

Product Category



Sheet & Trimboard



PVC Moulding



Fence & Railing



Ceiling &
Flooring Planks

www.botoplastics.com

CONTENT

About BOTO

1

Manufacturing capabilities

2

Quality consistency

3

PVC sheet

4

Typical applications

5

Typical applications

6

Typical properties

7

PVC trim board

8

Typical applications

9

PVC mouldings

10

PVC crown mouldings

11

PVC casing mouldings

12

PVC sill & drip mouldings

13

Beadboard & Column warp

14

Installation Guide

15

PVC Fence & Railing

16

PVC Fence & Railing

17

WPC & SPC flooring

18

WPC & SPC flooring

19

WPC & SPC flooring

20

Storage & Package

21

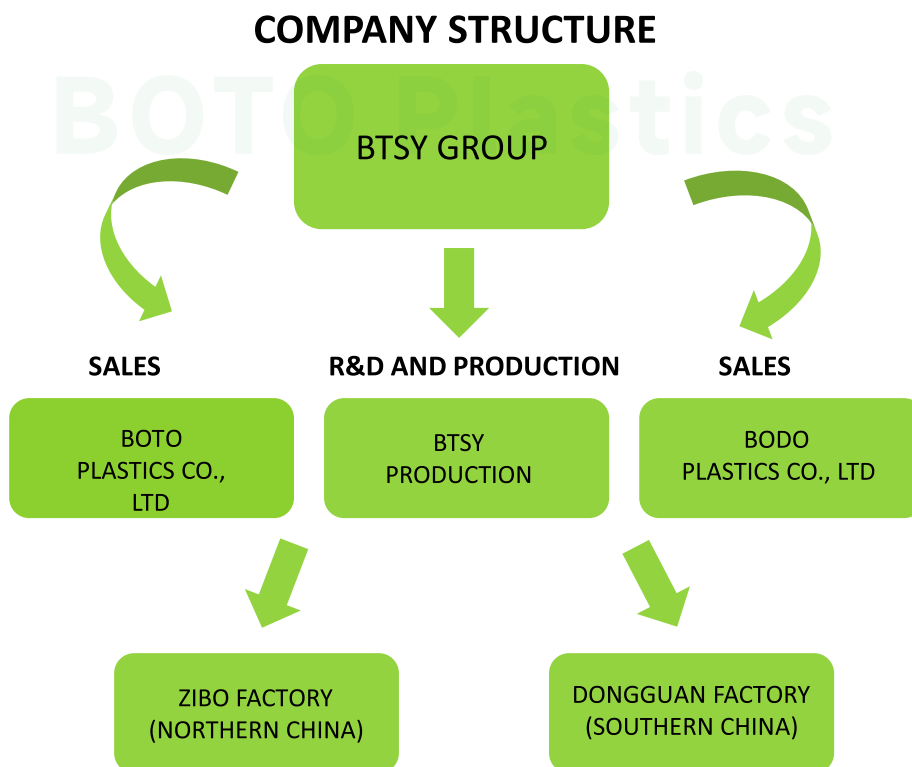
ABOUT BOTO

Boto Plastics is one of China's leading manufacturers for PVC sheet, trim board, mouldings, fence & railing, ceiling and flooring. As a part of Btsy Group, we have two factories throughout southern and northern China. For over 10 years, we have been an innovative worldwide provider of PVC substrate solutions for a wide range of customers and markets.

The sheets are designed to suit a diverse range of applications in various markets: construction, architectural projects, sign and display, furniture making and industrial applications. Efficient solutions are offered as part of the company's advanced products and services bundle for the construction and sign markets.

Specializing in construction and industrial applications, Boto Plastics developed a full range of products to meet your specific needs. Our sales office is in Guangzhou, our two factories cover over 100,000 square meters with top brand facilities like Cincinnati Extruder.

"Green Plastics Specialist!" Welcome to Boto Plastics for a complete support.



MANUFACTURING CAPABILITIES

- Production areas and warehouses cover over 100,000 square meters
- Total 48 extrusion lines and total monthly output reaches 4000 tons
- Advanced raw material auto-mixing system to ensure consistency of quality
- Experiences & knowledges of inspiring and reinventing for different industries

Factory areas



Production facilities

QUALITY CONSISTENCY

The Boto R&D team include raw material quality control department and products analysis & development center. The team has been introducing over 30 sets of newest equipment to monitor all details relates with production and quality.

We not only inspect raw material from different batches, but also take care of quality during production, packing and loading. The laboratory also focuses on the research of the relationship between structure and performance, and conducts this basic research together with universities.

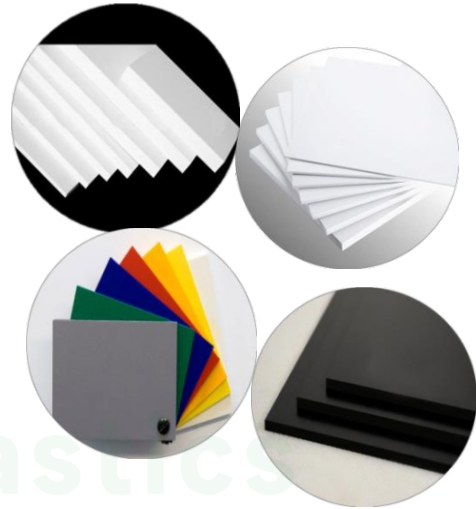









PVC SHEET

The Boto PVC Sheet (white & colored) is lightweight, versatile and durable which is ideal for use in many applications such as advertising, cabinet making and construction. It is easily handled, cut and fabricated by using conventional tools and equipments, and can be printed, painted or laminated. The improved surface hardness ensures reliable performance and excellent results. The robust surfaces and high durability make it also suitable for interior and exterior applications.

At a glance

- ◆ Universal sheet for all display applications
- ◆ Smooth surface finish with high surface hardness
- ◆ Excellent printing and laminating properties
- ◆ Easy processing
- ◆ Wide range of sheet sizes and thicknesses
- ◆ Special formats available on request
- ◆ Protection film available under request
- ◆ Fire behavior according to:
 - EN 13501-1:2007+A1:2009: B-s1, d0
 - NF P 92-507:2004: M-1, M-2
 - UL 94-2011: V-0



Color		Dimensions(mm)			Thickness Availability
		1220 × 2440	1560 × 3050	2050 × 3050	
White		1-30	1-20	1-20	
Red		3			
Yellow		3			
Blue		3			
Green		3			
Grey		3-20			
Black		3-20			

TYPICAL APPLICATIONS

Advertising

- Lightweight and durable signs
- Displays
- Exhibition stands
- POS/POP applications
- Direct printing
- Mounting
- Lettering
- Fabrication



◆ Signs



◆ Display



◆ UV flat-bed printing

◆ Screen printing



◆ Photo mounting



◆ Lettering



◆ Exhibition stands



◆ POS/POP applications

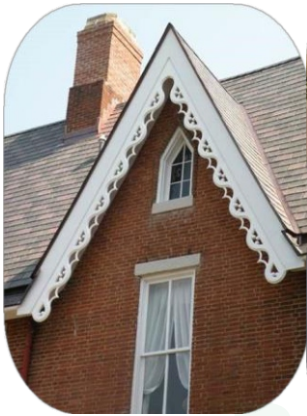
◆ Digital cutting & fabrication



TYPICAL APPLICATIONS

Construction & Furniture

- Interior and exterior decoration
- Shop fitting
- Shelf
- Kitchen and bathroom cabinets
- Formwork
- Shop fitting
- Protector case
- Bus flooring



◆ Interior and exterior decoration

◆ Partition



◆ Shelf

◆ Kitchen and bathroom cabinets

◆ Marine furniture



◆ Formwork

◆ Bus flooring

◆ Shop fitting

◆ Protector case

TYPICAL PROPERTIES

Property	Item	Method	Unit	Value	
Mechanical	Thickness		mm	10-30	
	Density	ASTM D792	g/cm ³	0.55±0.03	
	Tensile strength	Lengthways	ASTM D638	kg/cm ³	110
		Crosswise			80
	Flexural strength	Lengthways	ASTM D790	kg/cm ³	240
		Crosswise			180
	Compressive strength	ASTM D695	kg/cm ³	100	
	Compressive stress for strain of 30%	ASTM D695	kg/cm ³	180	
	Modulus of elasticity	ASTM D638	kg/cm ³	10000	
	Hardness	ASTM D676	Shore D	50-80	
Impact strength(+20°C)	ASTM D256	kg.cm/cm ³	1.5		
Thermal	Coefficient of linear thermal expansion (from-30°C to 50°C)	ASTM D696	mm/m°C	0.07	
	Heating deflection temperature	ASTM D648	°C	55	
	Thermal conductivity(from 0°C to 60°C)	DIN 52616	w/mk	0.03-0.07	
	Rate of heat transfer	DIN 52616	w/(m2k)	1.2-3.0	
Electrical	Volume resistivity	ASTM D257	Ω.cm	2.0×10 ¹⁴	
	Surface resistance	ASTM D257	Ω	9.0×10 ¹⁴	
	Dielectric strength	JI6911	kv/cm	48	
Others	Rw	DIN 52210/84	dB	35	
	Water absorption after 7 days	ASTM D570	%	0.5	
	Fire behaviour	UL-94	/	V-0	

ROHS DIRECTIVE

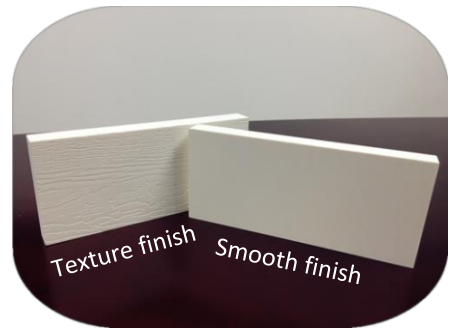
Our products meet the requirements of the ROHS directives of hazardous substances. There is no lead, mercury, cadmium, hexavalent chromium, polybrominated biphenyls (PBBs), polybrominated diphenylethers (PBDEs), formaldehyde, CFCs, asbestos, plasticizer nor silicone.

ISO9001:2008 APPROVED

We have introduced ISO9001:2008 since 2012 and ISO14001: 2004 since 2013. Strictest quality control system has been applied in BOTO, all we do it to ensure the consistent top quality.

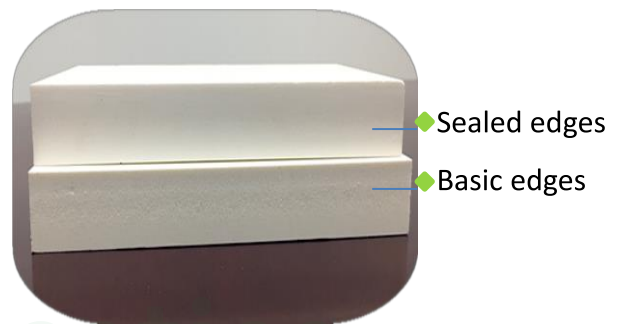
PVC TRIM BOARD

The Boto Trim is easy to work similar to wood, but much less maintenance than wood. It is available with a smooth finish on both sides, or texture on one side and smooth on the other. The edges of the trim product can be sealed to avoid the dust collecting from the installation. The sealed edges allows the dirt to be washed off easily.



FEATURES

- Low Maintenance, long-lasting
- Easy to work with
- Water, moisture and termite proof, fire retardant
- Can be cut, nailed, drilled, glued, painted just like wood
- No need to be painted, unless desired. When use outdoor, painting is recommended for maintaining color consistency for longer time
- Lifetime never rot
- Light weight, high-cell density
- Sealed edges available



ACTUAL DIMENSION

PVC TRIM SMOOTH&TEXTURE	Gauge	Width							Length						
		2 ½"	3 ½"	4 ½"	5 ½"	7 ¼"	9 ¼"	11 ¼"	15 ¼"	8'	10'	12'	16'	18'	20'
	3/8"	●	●	●	●	●	●	●	●	●	●	●	●	●	●
	1/2"	●	●	●	●	●	●	●	●	●	●	●	●	●	●
	5/8"	●	●	●	●	●	●	●	●	●	●	●	●	●	●
	3/4"	●	●	●	●	●	●	●	●	●	●	●	●	●	●
	1"	●	●	●	●	●	●	●	●	●	●	●	●	●	●

TYPICAL APPLICATIONS



◆ Trim board options on corridors and balconies



◆ When eave meet trim board

◆ Garage door trim



◆ Anything wood can do, pvc trim board can do better

◆ Window & door trim

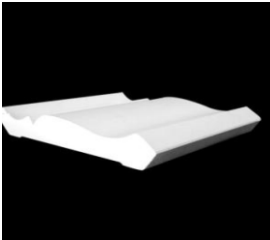
PVC MOULDINGS

The Boto PVC Mouldings are the perfect replacement of wood, with features of eco-friendly, lifetime never rot, low maintenance, moisture & termite proof, easy to install, does not promote mold or mildew, save time and labor with high energy efficiency, not easy to scratch, no painting required unless desired. When you think of moulding, we are an enduring solution for all your moulding need.

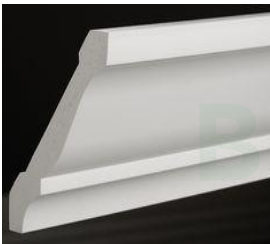


PVC CROWN MOULDINGS

Crown Mouldings provide a variety of application and aesthetic options. Traditionally used at the junction of a wall and ceiling, they can also be combined with other profiles to create classic build-outs and ornate decorative effects along the rake, above windows and doors, and at the capital and base of columns.



Crown
BTP49
9/16" × 3-5/8"



Crown
BTP47
11/16" × 4-5/8"

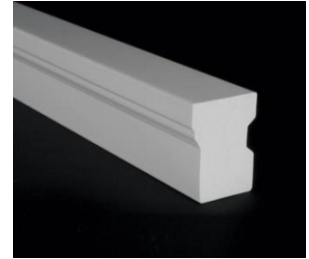


Rams crown
BTP068
1-13/32" × 2"

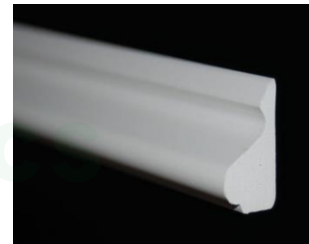


PVC CASING MOULDINGS

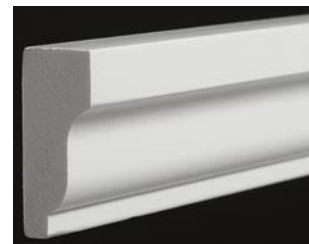
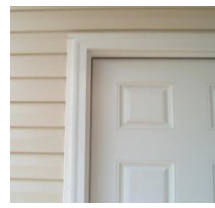
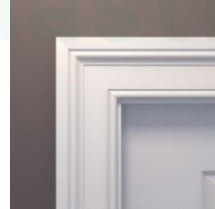
Casing profiles are decorative mouldings typically used flush against a wall, door or window to create surrounds. They can be used as a single moulding profile or combined with other profile styles to dramatically transform window and door aesthetics.



Brick Mould
BTP180
1-1/4" × 2"



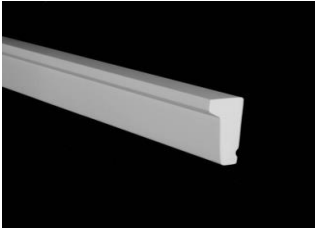
Base Cap
BTP164
11/16" × 1-1/8"



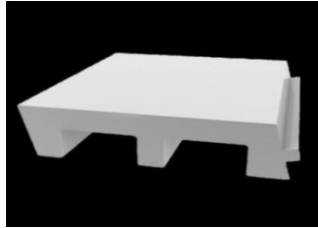
Shingle moulding
BTP210
11/16" × 1-5/8"

PVC SILL & DRIP MOULDINGS

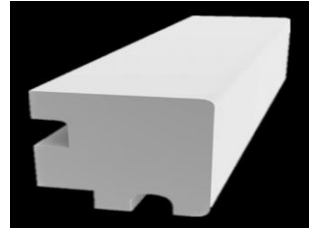
Sill & Drip profiles can be used as a brick ledge or water table to separate two different material veneers. These profiles also offer architectural detail and assist with water management around doors, windows and cladding.



Drip Cap
BTP197
11/16" × 1-5/8"



Sill
BTP948
1-1/4" × 4-15/16"

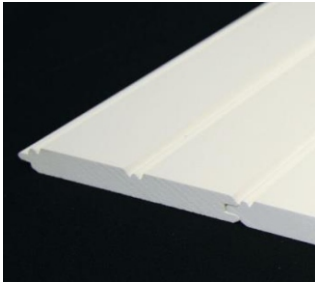


Sill nose
BTP937
1-3/8" × 1-5/16"

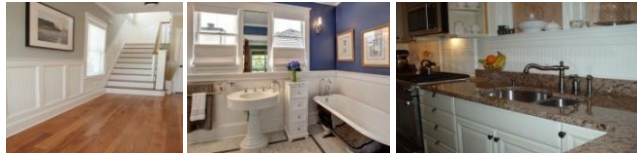


BEAD BOARD & COLUMN WRAP

Bead board is the perfect choice for porch ceilings and soffit applications, as well as for wainscot trim in bathrooms, laundry rooms or other high moisture interior areas.



Bead board
BTP001
1/2" × 5-1/8"



Column wrap is virtually impervious to moisture, mold and insects, does not require paint for protection, but easily accepts paint, quick and easy installation. It always comes with bed moulding and base cap moulding which makes it a perfect look.

Contact us now to explore more profiles or send us your design for our development references !

INSTALLATION GUIDE

INSTALLATION GUIDE: The Boto Trim & Moulding products can be easily installed using standard woodworking equipment.



◆ Cutting

Using standard woodworking equipment. For power miter saws, carbide tooth blades are recommended. Do not use fine-tooth metal-cutting blades, do not use plywood or metal blades because the kerf of the blade is too thin and can cause heat buildup in the material. To maintain a smooth edge, support the trim across its entire length when you cut it.



◆ Drilling

Do not use bits made for rigid pvc, avoid heat buildup from excessive friction, and remove the shavings from the drill hole frequently.



◆ Cleaning

Use a soft bristle brush and a bucket of soapy water to remove normal dirt and grime. For especially stubborn stains, use a cleaner suitable for pvc products. Your local building materials retailers can supply several different brands, better test any cleaners before use.

◆ Gluing

Temperature variation will cause pvc trim board and mouldings to expand and contract. To prevent open miter joints, we highly recommend gluing all joints using a quality instant glue or pvc cement, always test adhesive brands before using. You should use a combination of glue and mechanical fasteners, such as “glue and screw”, only glue is not enough to ensure a long-term bond.



◆ Painting

BOTO Trim and Moulding products does not require painting but, like any pvc product, it will weather over time and painting will enhance these beautiful products and help them maintain color consistency for many years. 100% acrylic latex paint is recommended.



◆ Nailing

Stainless steel or hot-dipped galvanized nails or screws are recommended.



PVC FENCE & RAILING

No one likes maintenance and this is exactly why vinyl Fence and Railing should be your first choice. By using it as a replacement of wood, we save you money and enhance the value of your property.

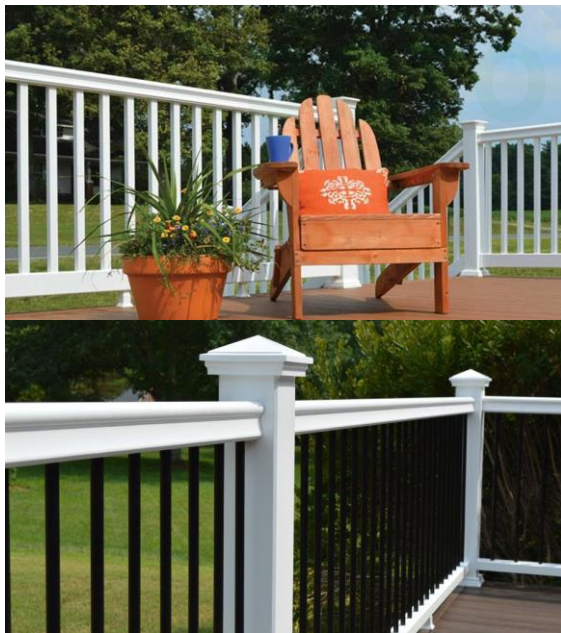
FEATURES

- ◆ Made of durable PVC material with low maintenance cost
- ◆ Unlike wood fences, it does not require sanding or painting
- ◆ Withstanding the impact of rain and moisture better than wood fences
- ◆ Easy and fast installation due to light weight design
- ◆ Easy to install for the do-it-yourself
- ◆ Hidden fasteners provide a clean, finished look
- ◆ Structural steel vinyl-clad posts provide superior strength and support



PVC FENCE & RAILING

A vinyl privacy fence makes your yard your castle. With a fence installed, you're free to relax and enjoy your property the way you want. Let the distractions of the outside world melt away while you take a nap in a hammock, barbecue with friends, or bask in the solitude of a morning dip in your pool. A vinyl privacy fence offers your home a layer of peaceful isolation that you can't get with other fencing products. The tall, imposing nature of vinyl fencing ensures that people are not able to look into your house. No matter what you are doing on your porch, in your pool, or on lawn chairs, you will not be bothered by the outside world.



vinyl railing is an affordable and durable choice for nearly any project or space. Lightweight and easy to work with, several styles ranging from classic to modern offer a wide variety of low-maintenance options that are built to last.

Available Colors

WHITE

BLACK

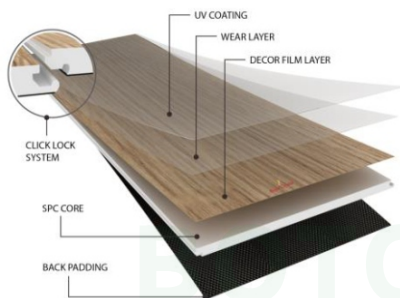
TAN

WPC & SPC FLOORING

While searching for the perfect vinyl flooring, you've probably come across the terms SPC and WPC. Both options are known for being 100% waterproof. SPC vinyl is a newer product with a signature rigid core that is virtually indestructible. WPC vinyl has been the gold standard for vinyl flooring and features a waterproof core that's comfortable as well as functional.



SPC FLOORING STRUCTURE

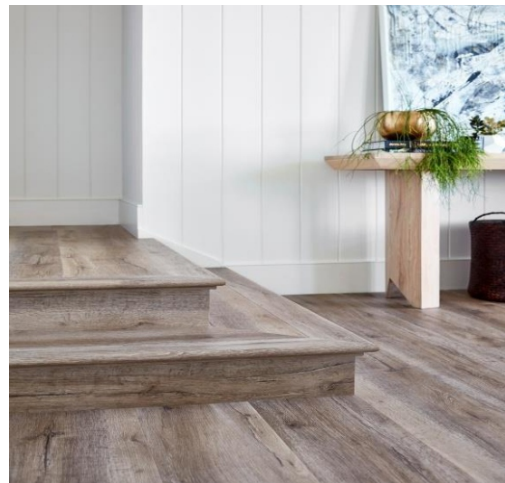


Benefits of SPC Flooring

- Waterproof
- Great for uneven subfloors
- Ultra-durable
- Realistic wood and stone looks
- Low-maintenance
- Easy installation

SPC rigid core luxury vinyl flooring is typically composed of four layers:

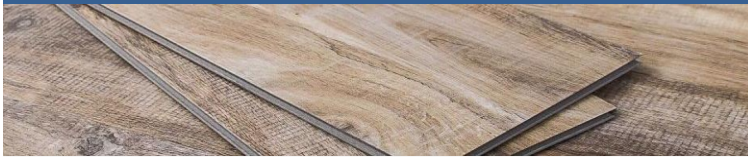
- ◆ **Back Layer:** This is the solid foundation of your plank. Often, the backing will also come with a pre attached underlayment.
- ◆ **SPC Core:** SPC flooring contains a solid, waterproof core that won't ripple or swell no matter how much liquid you subject it to.
- ◆ **Decor Film Layer:** This layer features hyper-realistic photo imagery that makes the vinyl look so much like stone and wood.
- ◆ **Wear Layer:** The wear layer is like the bodyguard of the plank; it protects your floor from wear and tear.



WPC & SPC FLOORING

WPC vinyl flooring is best known for being 100% waterproof. It is luxury vinyl flooring amped up a notch with a special waterproof core that makes it perfect for any room in the house.

SPC Flooring VS. WPC Flooring



	SPC Flooring	WPC Flooring
Cost	Slightly more affordable than WPC Flooring	More affordable than real wood or stone, but slight more expensive than SPC
Feel	Dense and rigid, no give underfoot. SPC core easily gets cold	Less dense, resilient underfoot. WPC core retains some warmth
Use	Basements, bathrooms, kitchens, commercial spaces	Basements, bathrooms, kitchens, all level of the home
Durability	More Durable	Slightly less durable than SPC
Moisture Resistant	100% waterproof core, waterproof from above and below	100% waterproof core, waterproof from above and below
DIY-Friendly	Easy to install on your own, interlocking tongue and groove system	Easy to install on your own, interlocking tongue and groove system

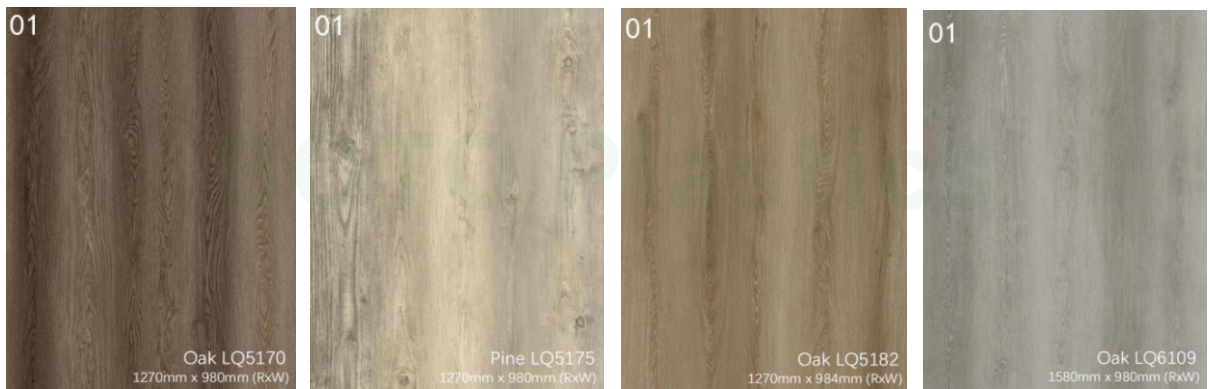
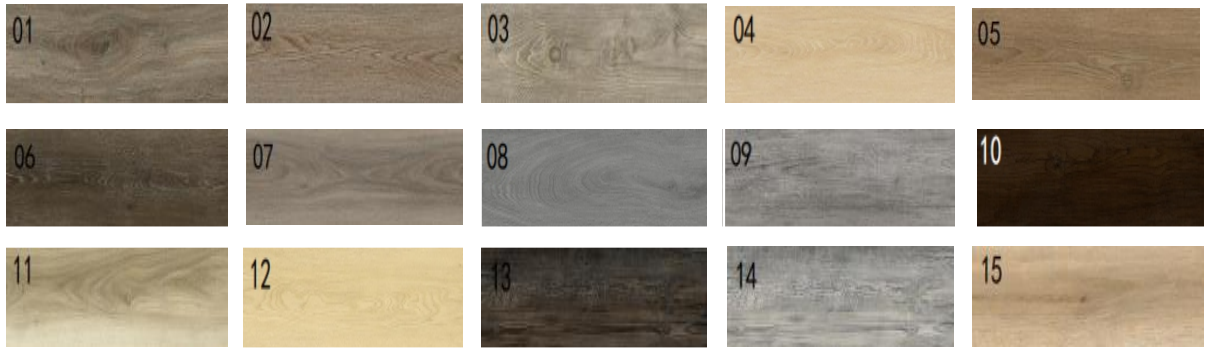
WPC waterproof flooring is typically composed of four layers:

- ◆ **Back layer:** This is the bottom layer of your plank. It provides a sturdy base, and sometimes comes with an attached underlayment for added convenience.
- ◆ **WPC core:** WPC flooring contains a solid, waterproof WPC core.
- ◆ **Decor Film Layer :** This layer features the gorgeous photo imagery of wood or stone that makes vinyl so popular as an alternative to natural materials.
- ◆ **Wear layer:** This layer protects your floor's surface from the wear and tear of everyday life. The thicker the wear layer, the better that protection



WPC & SPC FLOORING

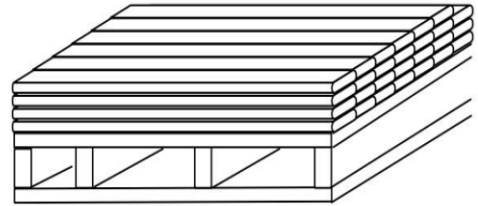
BOTO WPC and SPC flooring are with multiple designs to meet different aesthetic needs.



STORAGE & PACKAGE

Storage

- All the Boto products should be stored on a flat and level surface. PVC products are more flexible than wood, they may deform on uneven surfaces. Ensure that storage areas, as well as all framing and substructures, are flat and level to minimize uneven surfaces .
- Products are shipped with a protective covering. If covering has been removed, take care to keep product free of dirt and debris at jobsite. If product gets dirty, clean after installation. Care should be taken to avoid damage to the ends, edges and surfaces.



Package

We provide several packings for sheet, trim board and mouldings, to make sure the goods are perfectly protected and easy for loading&unloading.



Guangzhou Boto Plastics Co., Ltd

Unit 1806, No 2 Kailuo Avenue,
Guangzhou 510530 China
Phone +86 20 2816 8611
Email info@botoplastics.com
Website www.botoplastics.com

Main Factory
Yiyuan Economic Development
Zone
Zibo city, Shandong Province
China

Subsidiary Factory
Tinghuan Road, Houjie Town
Dongguan City, Guangdong
Province
China

Quality products
Outstanding service
Always being better



[View Website](#)

Due to a policy of continuous improvement, specifications may change without notice.

BOTO PLASTICS 2022